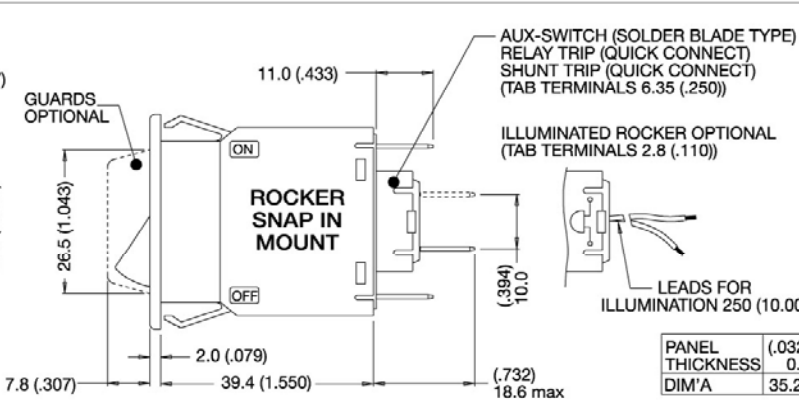
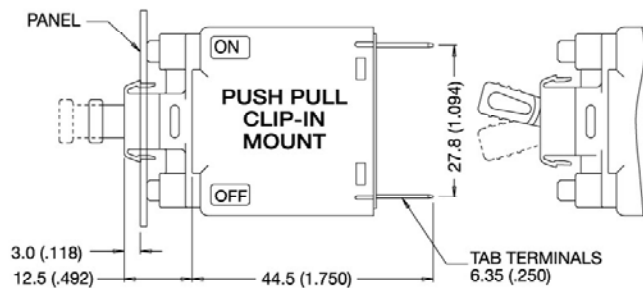
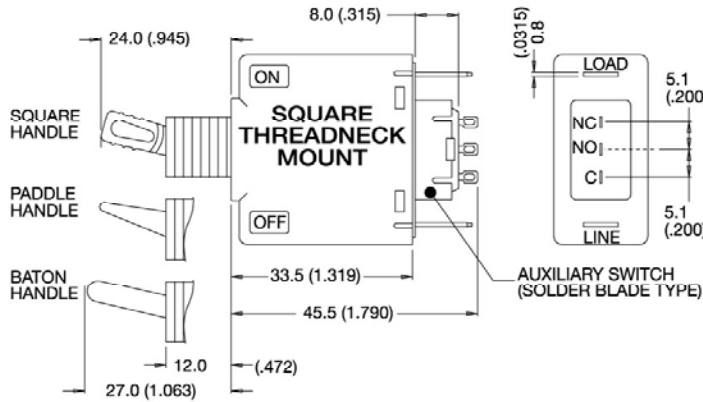
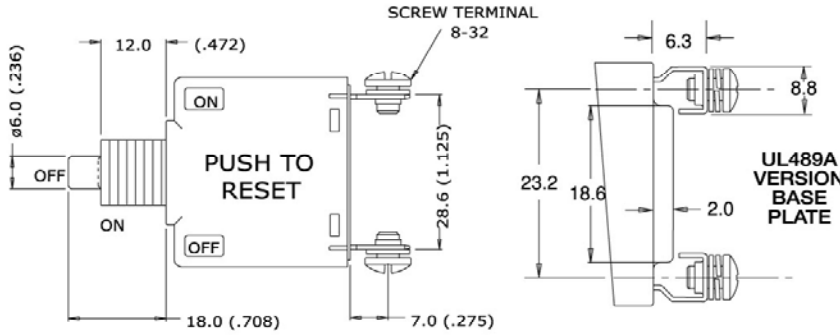
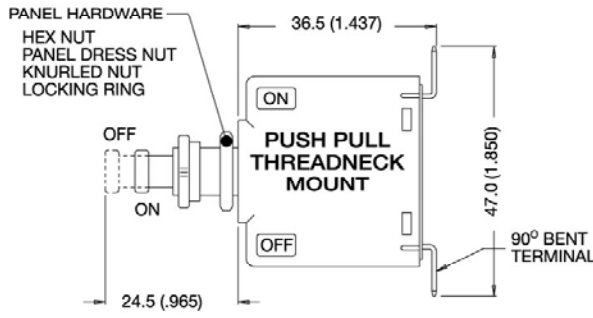
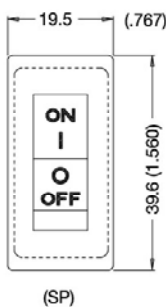
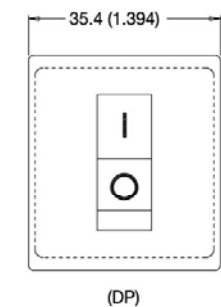
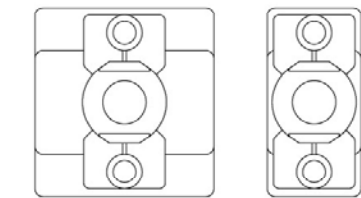
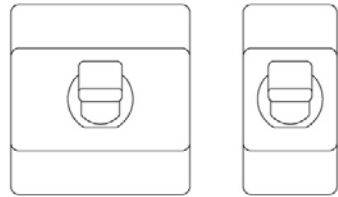
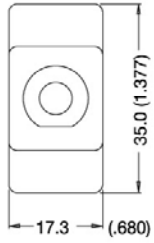
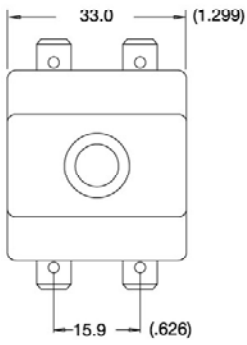


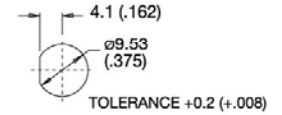
DOUBLE POLE SINGLE POLE



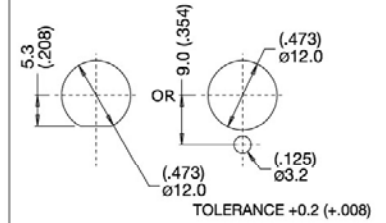
PANEL CUT-OUT DETAILS

AVAILABLE WITH PUSH PULL AND PUSH TO RESET CONFIGURATIONS ONLY

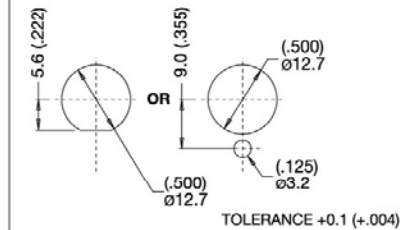
MOUNTING DETAILS FOR 3/8-32 THREAD TYPE



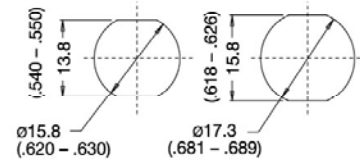
MOUNTING DETAILS FOR M12 THREAD TYPE



MOUNTING DETAILS FOR 1/2-32 THREAD TYPE



CLIP-IN PUSH PULL AND PUSH TO RESET HANDLES | CLIP-IN SQUARE, PADDLE AND BATON HANDLES



PANEL THICKNESS 0.8 - 3.2 (.032 - .126)

		+0.2 (+.008)	
		33.5 (1.320)	(DP)
		17.6 (.693)	(SP)
			+0.2 (+.008)
			DIM A
PANEL THICKNESS	(.032 - .063)	(.066 - .102)	(.106 - .126)
	0.8 - 1.6	1.7 - 2.6	2.7 - 3.2
DIM A	35.2 (1.386)	36.0 (1.417)	36.4 (1.433)

* All dimensions in millimeters (Inches)